

'78 CHEVY RECREATION



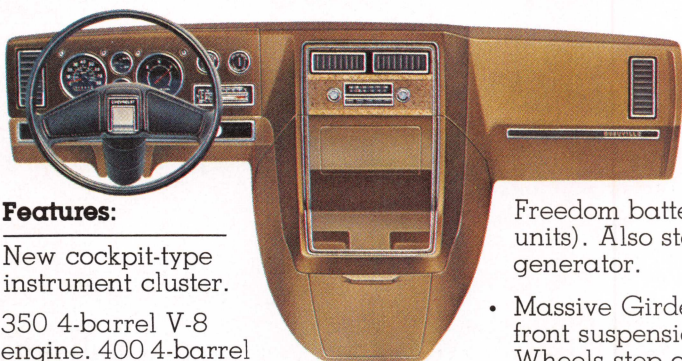
CHEVY. A SOLID FOUNDATION T

Your home-away-from-home is never far away from the people who know it best.

It's not just the versatility of a Chevy RV Cutaway Van chassis that makes it such a good base for RVs—it's also the broad network of Chevrolet dealers

who can service your RV chassis wherever you travel in the U.S.A. Chevy's got more dealers than any other truck manufacturer. It's a comforting thing to know when you are traveling in country you don't know.

For 1978 there's a new grille and chrome bumper treatment, new rectangular headlights when chrome grille is ordered, all-new instrument panel and new engine cover incorporating a parcel tray, beverage holders and a storage compartment.



Features:

- New cockpit-type instrument cluster.
- 350 4-barrel V-8 engine. 400 4-barrel V-8 engine also available.
- High Energy Ignition system. Helps provide quick starts and all-weather protection from moisture, dirt and road splash.

- Extended hood makes possible 27 easy service checks.

- Heavy-duty Delco Freedom battery (146-inch-wheelbase units). Also standard: HD 61-amp generator.

- Massive Girder Beam independent front suspension with coil springs. Wheels step over rough spots individually to help smooth the ride.
- Front stabilizer bar.
- Heavy-duty two-stage rear leaf springs automatically adapt to change in load.

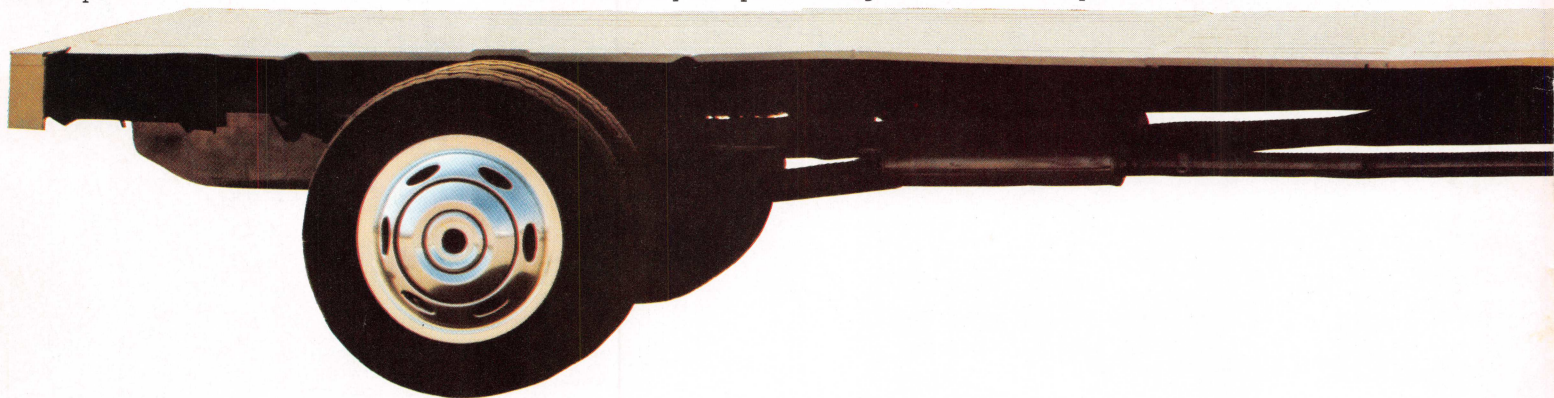
- Heavy-gage cab components. All-welded construction.

- Many cab parts are of galvanized steel to help resist corrosion.

- Cab with doors attached is submerged in primer and electrically charged to draw paint into seams and hidden crevices.

- Automatic transmission.

- Computer-matched brake systems. Front disc brakes and finned drum rear brakes are incorporated into complete braking systems which are computer-matched to GVWR.



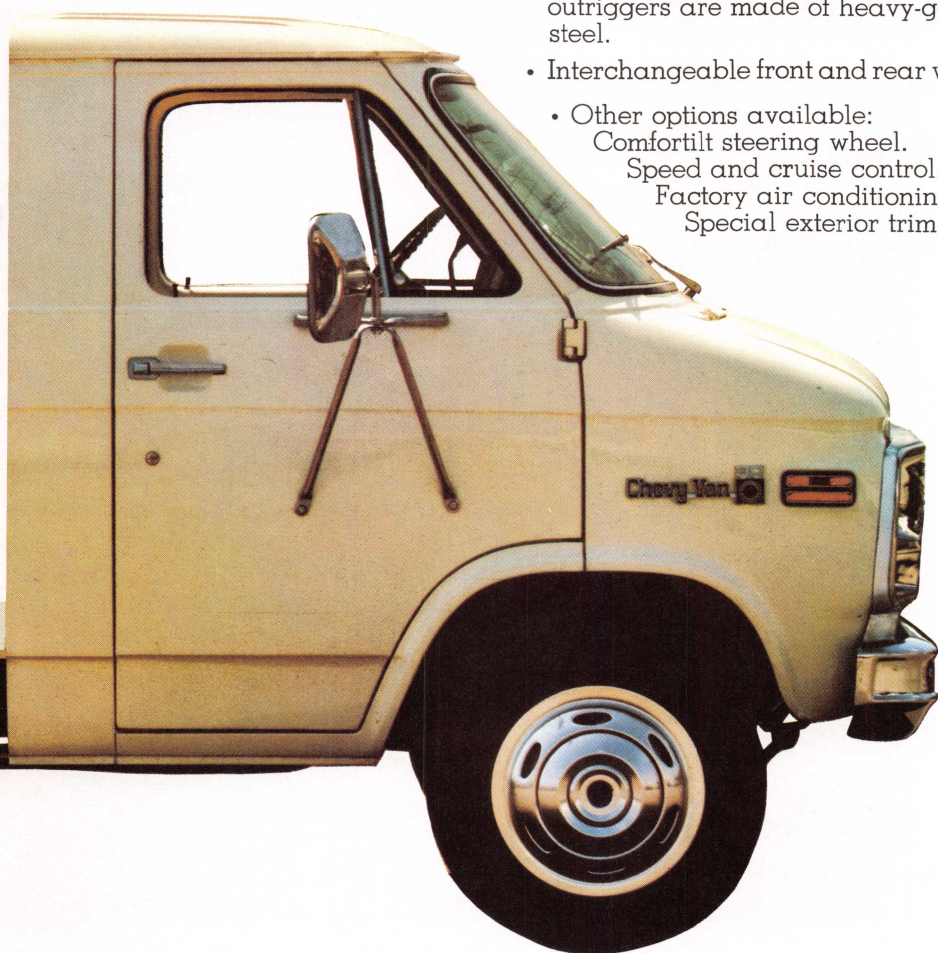
Chevy Chassis for Mini Motor Homes.

Chevy RV Cutaway Vans provide a good base for small motor homes. These Chassis Cab units offer the builder great flexibility of design with the driver's compartment open to the rear living area. Chevy RV Cutaway Vans are available as 125-in.- or 146-in.-wheelbase models with single or available dual rear wheels and GVWRs ranging from 8,400 to 10,500 lbs. (The single-rear-wheel 125"-wheelbase model is not available in California.)

Many vehicles in this catalog are shown with available factory-installed options, dealer accessories and specialized equipment from various independent suppliers. ©1977—Chevrolet Motor Division, General Motors Corporation

O BUILD ON.

- Special interior trim available. Includes driver and passenger high-back bucket seats plus other interior appointments.
- 33-gallon fuel tank.
- Available power steering provides a consistent steering effort on or off road. (Required on single-rear-wheel 125"-wheelbase models.)
- Front and rear floor panels are welded to side rails. Cross sills and outriggers are made of heavy-gage steel.
- Interchangeable front and rear wheels.
- Other options available:
 Comfortilt steering wheel.
 Speed and cruise control.
 Factory air conditioning.
 Special exterior trim.



Contempo



T.E.C.



Mobile Traveler

Chevy Van conversions.

Chevy Vans and Sportvans combine plenty of interior space with a compact overall length to make them ideal for RV conversions. You get nearly 12 feet of clear space between the engine housing and rear door in a 125-in.-wheelbase Chevy Van. Yet overall length is only 202¼ inches. And Chevy's 110-in.-wheelbase van has nearly 10 feet of open space within a 178¼-in. overall length. Chevy Vans are easy to maneuver in tight places, too.

Shown on cover (left to right): Top row—Vista III, Airstream, Versavan. Middle row—Holiday Rambler, Sports Coach. Bottom row—El Dorado, Itasca, Turtle Top.

CHEVY. A SOLID INVESTMENT IN

Chevy-based motor homes.

Motor home manufacturers all over the country have found that Chevy chassis offer a solid foundation for smooth-riding motor homes. Chevy motor home chassis are available in four wheelbase lengths—125, 133, 157 and 178 inches. They can accommodate bodies up to 28 feet long. All feature Chevy's flat-top frame design that helps make installation by motor home builders simple and economical. GVW ratings range from 10,500 lbs. up to 14,500 lbs.

High Energy Ignition system.

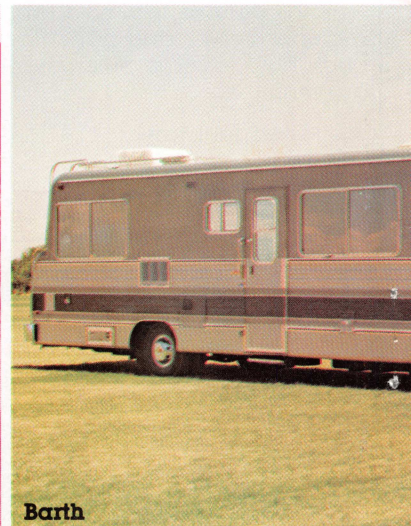
This standard ignition system delivers a spark that's hotter than Chevy's previously used conventional ignition system. Helps provide quick starts and all-weather protection from moisture, dirt and road splash. Solid-state design eliminates points and ignition condenser.

Computer-matched brake system.

Front disc brakes and finned drum rear brakes are incorporated into complete braking systems which are computer-matched to the gross vehicle weight of the truck. Lining areas, size and capacity of power assists, wheel cylinder size—all are preselected at the factory. Four-wheel disc brakes are used on the 178-in.-wheelbase models.



Argosy



Barth



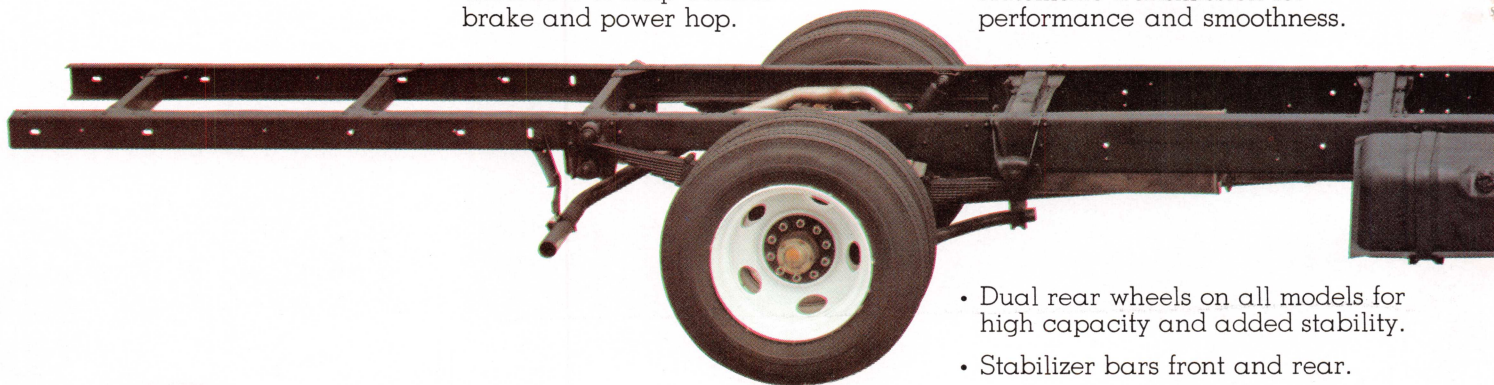
Pace Arrow



Midas

Features:

- 4-wheel disc brakes standard for 178-in.-wheelbase model, available for 158.4-in.-wheelbase model rated at 14,500 lbs. GVW.
- Heavy-duty two-stage rear leaf springs that automatically adapt to change in load.
- Counter-angled rear shock absorbers to help control brake and power hop.
- 454 V-8 engine. Standard on 178-inch-wheelbase model, available on all others. 350 V-8 is standard on all other models.
- Engine and transmission oil coolers.
- Coolant recovery system.
- Heavy-duty Delco Freedom battery.
- Heavy-duty Delcotron generator.
- Automatic transmission for performance and smoothness.



- Dual rear wheels on all models for high capacity and added stability.
- Stabilizer bars front and rear.

MOTOR HOMES.

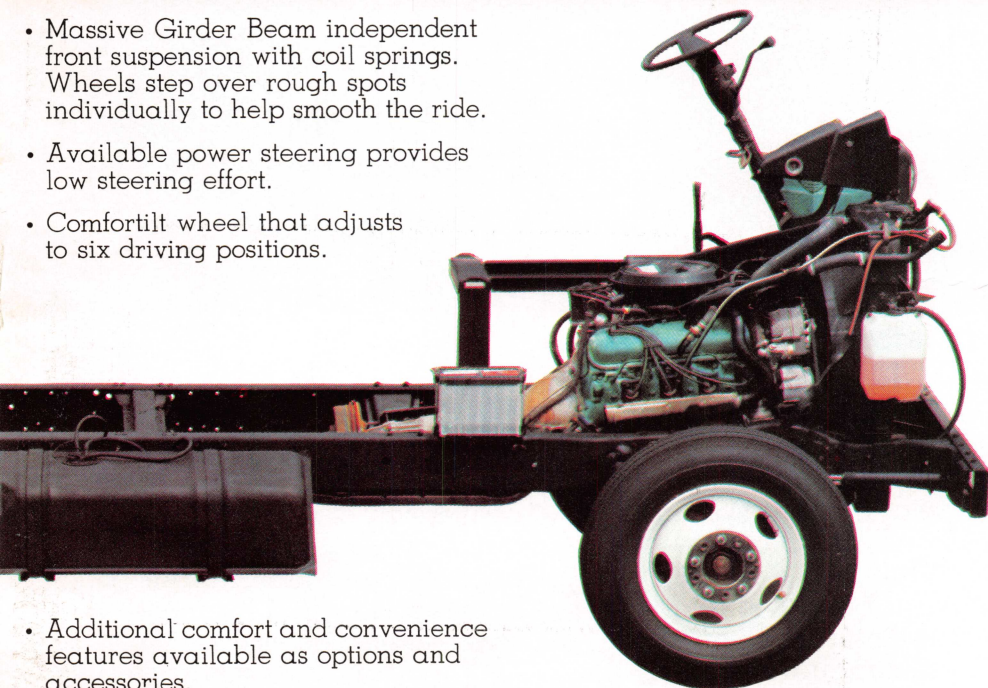


Champion



Itasca

- Massive Girder Beam independent front suspension with coil springs. Wheels step over rough spots individually to help smooth the ride.
- Available power steering provides low steering effort.
- Comfortilt wheel that adjusts to six driving positions.



- Additional comfort and convenience features available as options and accessories.

CHEVY. THE PICKUP CAMPER'S PICKUP.

A wide range of features makes Chevy pickups especially suitable for use as campers. These features include tough, double-wall body construction in critical areas and front disc/rear drum brakes computer-matched to pickup GVW rating.



Camper Special Packages.

Available on Series 20-30 pickups with V-8 engine and automatic or 4-speed transmission. Most packages include HD shocks and stabilizer bar.



"Big Dooley." Just right for big loads.

Dual rear wheels are available for Series 30 Fleetside pickups. They offer added capacity for hauling large loads. Combine them with Chevy's required Trailering Special Equipment and tow 5th-wheel trailers up to 10,000 lbs.

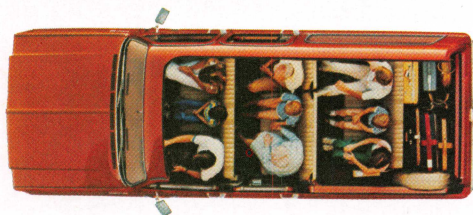


CHEVY. BECAUSE TRAILERING C

Chevy Suburban.

Definitely the one for big loads and lots of people. With available seating that includes an available bucket seat option, Suburban can carry up to nine passengers plus luggage. Maximum cargo capacity is up to 3,165 lbs. And as a super towing vehicle, a Series 20 Suburban, properly equipped, can move a combined weight of 15,000 lbs. including the Suburban, passengers, cargo and trailer.

Double rear doors 40 inches high and nearly 60 inches wide are standard for easy loading of bulky cargo. A wagon-type tailgate can be ordered with either manual or available power window. A wide range of engines is offered, and a 4-wheel-drive version of Suburban can also be ordered with Chevy's full-time 4-wheel drive when the available automatic transmission is specified. Chevrolet's conventional 4-wheel-drive system comes with 4WD Suburbans equipped with 3-speed or 4-speed manual transmissions. Front free-wheeling hubs are standard with conventional 4WD.



Shown above:
Chevy Suburban with available second and third seat.

A word about engines

The Chevrolet Trucks in this catalog are equipped with GM-built engines produced by various divisions. Please refer to the engine chart included in this catalog or available from your dealer for complete details about engine sources and availability.



Chevy Suburban with Taurus trailer



Chevy Blazer with Prowler trailer

Chevy Blazer.

Blazer can tow trailers up to 6,000 lbs. fully loaded when equipped with Chevy's available Trailering Special Equipment. Two different systems are offered on 4WD Blazers—Chevy's full-time 4-wheel drive with available automatic transmission or conventional 4WD with manual transmissions.

Power windows and power door locks are available this year, and a new available fold-up rear seat makes conversion of the rear area quick and easy. Also, the floor area behind the front seat has been lowered for more rear-seat leg room.

ALLS FOR SOMETHING SPECIAL.



Chevy Trailering Package.

A Chevy Trailering Special Package is available for pickups, Blazers and Suburbans. It includes power steering and a heavy-duty battery, and requires a V-8 engine—axle ratio combination suitable for the class of trailer to be towed—light, medium or heavy. Other required equipment includes a heavy-duty generator, 4-speed or automatic transmission and a heavy-duty radiator.

For complete requirements and recommendations to meet your towing application, see your Chevy dealer or the 1978 Chevrolet Trailering Guide.

Locking differential rear axle.

When one rear wheel loses traction, this available rear axle transfers driving power to the wheel with the most traction. It's especially helpful when you drive in snow, mud or sand.

The locking differential rear axle is available on most C-K10, 20 and 30 Series pickups, Blazers, Suburbans, Chevy Vans, Sportvans and Cutaway Vans in a wide range of rear axle ratios.

Weight-distributing hitch platform.

A Chevrolet design, the available platform is bolted to the truck frame through pre-punched holes in the frame. It accommodates a maximum trailer weight capacity of 7,000 lbs. on pickups and Suburbans, 6,000 lbs. on Blazer.



Chevy Sportvan with Terry trailer

Chevy Van.

In addition to offering a spacious cargo area, Chevy Van is also a versatile towing vehicle. With Chevy's available trailering equipment, the Van in G30 Series can tow Class III trailers that weigh up to 6,000 lbs. The available 350-4 and 400-4 V-8 engines deliver plenty of pulling power.

Multi-leaf rear springs are the two-stage type that stiffens as the load increases. And a tight turning circle helps make Chevy Van highly maneuverable in close quarters.

RV OPTIONS.

Some of the more popular options are discussed here. Your Chevy dealer can provide more complete information.

Radios.

A number of radio combinations are available from your Chevy dealer including a new 40-channel CB radio (dealer installed).

Comfortilt steering wheel.

Adjusts to six different positions for almost every driver's comfort.



Auxiliary and extra-capacity fuel tanks.

Auxiliary fuel tanks for pickups come in 16-gallon capacity for 117.5-in.-wheelbase models and 20-gallon capacity for 131.5-in.-wheelbase models. Larger capacity tanks that replace the standard tank are available for Blazer, Suburban, Chevy Van and Sportvan.

Sliding rear window.

Offers increased ventilation and pickup cab-to-camper communication. It slides easily and it's lockable, too.

Auxiliary battery.

Recommended not only for RVs but for trailer towing vehicles as well. The auxiliary battery helps provide a dependable power source for both truck and trailer.

A WORD ABOUT THE COMPONENTS AND OPTIONAL EQUIPMENT IN THESE CHEVROLETS.

The Chevrolets described in this brochure incorporate thousands of different components produced by various divisions of General Motors and by various suppliers to Chevrolet. From time to time during the manufacturing process it may be necessary in order to meet public demand for particular vehicles or equipment, or to meet federally mandated emissions, safety and fuel economy requirements, or for other reasons, to produce Chevrolet products with different components or differently sourced components than initially scheduled. All such components have been approved for use in Chevrolet products by Chevrolet Motor Division and will provide the

quality performance associated with the Chevrolet name. With respect to factory-installed extra cost optional equipment, make certain you specify the type of equipment you desire on your vehicle when ordering it from your dealer. Before taking delivery of the vehicle, we suggest you verify that it includes the optional equipment that you ordered or if there are changes, they are acceptable to you.



BUILT TO STAY TOUGH.

Driveline combinations for Trailering Special Packages—Pickup, Suburban, Blazer.

†GCWR in Pounds by Axle Ratio		8000	8500	9000	9500	10,500	11,000	11,500	12,500	13,500	14,500	15,000	17,000	
SUBURBAN Engine: 305-2 V-8*	C-K10	3.73		4.11										
	C-K20	4.10				4.56								
	350-4 V-8	C-K10	3.07	3.40		3.73	4.11							
		C-K20				3.73	4.10		4.56					
	400-4 V-8	K10		3.07			3.73							
		K20					3.73							
	454-4 V-8	C10						3.07		3.40	3.73			
		C20							3.21		3.73		4.10	
	Transmission	All	Automatic (all engines) or 4-Speed (350 V-8 only)											
	Tires, Front & Rear	C-K10	L78-15B											
	C-K20	8.75-16.5C												
BLAZER Engine: 305-2 V-8*	C-K10	3.73		4.11										
	350-4 V-8	C-K10	3.07			3.73	4.11							
	400-4 V-8	K10		3.07			3.73		4.11					
	Transmission	C-K10	Automatic (all engines) or 4-Speed (350 V-8 only)											
	Tires, Front & Rear	C-K10	H78-15B											
	PICKUP Engine: 350-4 V-8	C-K10	3.07	3.40		3.73								
C-K20					3.73	4.10		4.56						
C-K30					3.73*	4.10		4.56						
400-4 V-8		K10		3.07			3.73							
		K20					3.73							
400-4 V-8		K30					4.10		4.56					
454-4 V-8		C10					3.07		3.40	3.73				
		C20							3.21		3.73		4.10	4.56
		C30							3.21		3.73		4.10	4.56
Transmission		All	Automatic (all engines) or 4-Speed (350-4 V-8 only)											
Tires, Front & Rear		C-K10	L78-15B											
		C-K20	8.75-16.5C											
		C-K30	8.75-16.5C (C30); 9.50-16.5D (K30)											
GCW Shown on Trailering Special Nameplate		8000				10,000				13,000	14,000	15,000		

*Not available on K models.

†GCWR: Gross combined weight of vehicle, trailer, cargo and occupants.

*NOT AVAILABLE IN CALIFORNIA.

For complete specifications, see the 1978 Chevrolet Trailering Guide.

All illustrations and specifications contained in this literature are based on the latest product information available at the time of publication approval. The right is reserved to make changes at any time in prices, colors, materials, equipment, specifications and models, and also to discontinue models. Chevrolet Motor Division of General Motors Corporation, Detroit, Michigan 48202. Litho in U.S.A.